

Contents

Step-Up Program Manager builds on the skills you already have and gives you the features you've always wanted to help you save time and organize your applications and files into logical groups.

To learn how to use Help, Press F1.

Features you wont find in Windows Program Manager:

- [Program Manager Mode](#)
- [Switchboard Mode](#)
- [Desktop Mode](#)
- [Switching Between Modes](#)
- [Desktop Buttons](#)
- [SubGroups](#)
- [Group Display Styles](#)
- [Find Command](#)
- [ToolBar](#)
- [Run Dialog with History](#)
- [Hiding, Showing & Closing Windows](#)
- [Sorting Groups](#)
- [Quick Menus](#)
- [Reminder Alarms & Scheduled Events](#)
- [Resource Monitor](#)

How To...

- [Arrange Windows and Icons](#)
- [Choose a Different Icon](#)
- [Organize Applications and Documents](#)

Commands Listed by Menu

- [File Menu Commands](#)
- [Options Menu Commands](#)
- [Windows Menu Commands](#)

How to Reach Us

- [Technical Support.](#)

Arrange Windows and Icons

Use Step-Up Program Manager to arrange your groups so that your icons are easy to see. The [Tile](#) command resizes and arranges the open group windows side by side in the Step-Up Program Manager window. The [Cascade](#) command resizes and layers open group windows so that each title bar is visible. A check mark next to the option in the menu indicates that it is in effect.

To arrange group windows

From the [Window menu](#): choose [Cascade](#), [Tile](#), or Tile Horizontally.

To arrange program-item icons

From the [Window menu](#): choose Arrange Icons.

You can also make sure that the items in a group window are always arranged whenever you change a group window's size, add or move items. To do this, select Auto Arrange from the [Options](#) Menu

Special Feature:

When Auto Arrange is enabled Step-Up Program Manager will also auto arrange the main program group items. This is different from the normal behavior of Windows Program Manager.

Choose a Different Icon

You can select any icon from any other [icon source](#) available to you.

To choose a different icon

Select the program item with the icon you want to replace.

From the [File](#) menu: choose **P**roperties to bring up the Program Item Properties dialog.

In the Program Item Properties dialog box: choose **C**hange Icon.

Select the icon you want to use, or Browse for any [Icon Source](#), then choose the OK button.

In the Program Item Properties dialog box: choose the OK button.

Special Feature:

Step-Up Program Manager also allows you to change group icons! highlight any group icon and Select **P**roperties from the **F**ile Menu.

Quick Tip:

Click the right mouse button on any group item for the quick menu. Select **C**hange Icon and proceed as usual.

Organize Applications and Documents

Use Step-Up Program Manager to organize your group items into groups that make sense to you. For help with organizing applications, choose one of the following topics:

[Arrange Windows and icons](#)

[Change Properties](#)

[Copy a Program Item](#)

[Create and Delete Groups](#)

[Create and Delete Program Items](#)

[Move a Program Item](#)

[Move a Group](#)

File Menu Commands

Use the scroll bar to see more commands.

New

Adds an item to a group or creates a new group.

Open

Starts the selected application and opens an associated document (if there is one), or opens the selected group.

Move

Moves a group or program item to another group.

Copy

Copies a program item to another group.

Delete

Deletes a group or program item from a group.

Properties

Changes the properties (such as the description, group file name, or icon) of a group or program item.

Run

Starts an application and opens an associated document (if there is one), or opens the selected group. The Run command also keeps a history of previously run programs. See [Run History](#) for details.

Exit Windows

Quits Step-Up Program Manager and Windows.

New Features:

[Find](#)

[Find Again](#)

Find Group Item

Find

The Find command helps you quickly locate a program item when you can't remember what group it is in. Once a group item has been located, the group containing it is automatically opened and the found item is highlighted. The Find command finds group items by descriptions, command lines, working directories, or icon paths. Indicate text restrictions such as containing/not containing, beginning with, and ending with text.

Options Menu Commands

A check mark beside the command means it is in effect. Use the scroll bar to see more commands.

Auto Arrange

Rearranges the program-item icons in a group window whenever you change the window's size, add new items, or move items.

Minimize on Use

Reduces the Step-Up Program Manager window to an icon whenever you start an application (unless the application automatically starts as an icon).

Save Settings on Exit

Saves the arrangement of Step-Up Program Manager windows and icons when you quit Windows.

New Features:

Font

Allows you to choose the font, font style, size, and view a sample of the results.

Spacing

Allows you to configure the vertical and horizontal icon [spacing](#), the line mode spacing, and the icon title wrap.

Configure

Allows you to [configure](#) Step-Up Program Manager features.

Alarms

Set a reminder alarm or schedule a program to run while you're away. See the [Alarms and Scheduled Events](#) topic for more.

System Resources

Prevent common program crashes before they happen by monitoring your system's vital resources. If critical components of your Windows environment should drop below an acceptable level (a level that you can set), you'll be notified - and can take steps to ease the strain before you lose any work to a program crash. See the [System Resources](#) topic for more...

Mode

Allows you to switch between the different program modes. See [Switching Between Modes](#) for more details.

Window Menu Commands

Cascade

Arranges open windows so that the title bar of each window is visible.

Tile

Arranges open windows side by side vertically so that all of them are visible.

Arrange Icons

Arranges (into rows) all program-item icons for a selected group. If a group icon is selected, arranges all group icons into rows.

Group List

The names of your first 9 groups are listed at the bottom of the Window menu. Select any name from this list to quickly open the group. If you have more than Nine groups, you'll see the [More Windows...](#) menu option at the bottom of the Windows menu.

Hint: The [More Windows](#) control is also available on the [toolbar](#).

New Features:

Tile Horizontally

Arranges open windows side by side horizontally so that all of them are visible.

Close All

Closes all open windows at once.


Hide All/Show All

Hides open windows so you can find your groups easily. Show All shows all hidden items.

View Group As

Changes the appearance of the group. View the group in Icon, Toolbar or list mode.

Sort Group

Sort your groups alphabetically to make it easier to find items in large groups. Select Sort Group from the Window Menu or the  button on the [toolbar](#).

Change Properties

You can change the properties of a program item or the description of a group.

For program items, you can change the description of the item the working directory where files that the application creates are stored The shortcut key for switching to the application when it's running the icon that Windows uses to represent the application whether or not the application is minimized to an icon when you start it.

For a group, you can only change the description and the icon.

To change the properties of a program item

1. Select the icon for the item or group.
2. From the File menu, choose Properties.
Or, press ALT+ENTER.
3. In the Program Item Properties dialog box change properties as needed.
4. Click the OK button.

For help with the Program Item Properties dialog box, choose the Help button or press F1 while using the dialog box.

Create and Delete Groups

Create and delete groups in Step-Up Program Manager to organize your applications and documents.

To create a group

1. From the File menu choose New.
2. Select the Program Group option, then click the OK button.
3. In the Description box, type a description for the group.
This description will appear in the title bar of the group window and below the group icon.
4. Click the OK button.

Step-Up Program Manager creates a .GRP file for the group; you can leave the Group File box blank.

To delete a group

1. Reduce (to an icon) the window of the group you intend to delete.
2. Select the icon.
3. Step-Up Program Manager File menu: choose Delete.
Or, press DEL.
4. Delete dialog box: click the Yes button.
Or, press ENTER.

Create and Delete Program Items

A program-item icon represents an application, accessory, or document in a Windows group. Select the icon for a program item to start the application or accessory, or open the document. Create a program item by using the mouse to drag a program or document file from File Manager to a Step-Up Program Manager group.

To create a program item

1. Open the group window where you will add an item.
2. From the File menu, choose New.
3. Select the Program Item option, then click the OK button.
4. Fill in the Program Item Properties dialog box as necessary, then click the OK button.

For help with the Program Item Properties dialog box, choose the Help button or press F1 while using the dialog box.

To delete a program item from a group

1. Select the icon for the item you want to delete.
2. From the File menu, choose Delete.
Or, press DEL.
3. In the Delete dialog box, click the Yes button.
Or, press ENTER.

When you delete an item from a group, you remove it from the group window, but not from your hard disk.

Move a Program Item

You can move a group or program item from one group to another. When you move a group or program item, it is removed from the source group.

To move a group or program item to another group

1. Open the group window that contains the program item you want to move.
2. Make sure the destination group window or its icon is visible.
3. Drag the program-item icon to the destination-group window (or icon).
4. Release the mouse button when the icon is on top of the destination-group window (or icon).

You can also move a program item by choosing the Move command from the File Menu.

Copy a Program Item

When you copy a program item, the original remains unchanged in the source group. Group items can be copied in the same group, into other group windows or onto the [Desktop](#) surface.

To copy a program item to another group using the mouse

1. Make sure that the destination group window or its icon is visible..
2. Select the program item you want to copy.
3. Press and hold down CTRL while dragging the program-item icon from its current location to the destination-group window or icon.
4. Release the mouse button and CTRL key when the copied icon is inside the destination-group window or on top of the destination-group icon.

You can also copy a program item by choosing the Copy command from the file menu.

Start an Application with the Run Command

You can use the Run command to start an application that you run only occasionally or have not yet added to a group. When you start the application, you can also open a document.

To start an application with the Run command

1. From the File menu, choose Run.
2. In the Command Line box, type the path and name, including the extension, of the program file. (You can also specify the name of a document to open). For a list of previously run programs click on the down arrow at the end of the command line box. This is the [Run History](#) list.

Example:

To run Microsoft Word and open a document named STATUS.DOC, in the Command Line box type **c:\word\word.exe status.doc**

1. Select the Run Minimized check box if you want the application to be reduced to an icon when it starts.
2. Choose the OK button. Or, press ENTER.

Tip:

Its easy to start a DOS session from the Run Dialog. Just type **COMMAND** (or **COMMAND.COM**) on the command line and a full screen DOS window appears. Dont forget to type **EXIT** from the DOS command prompt to return to Windows.

Running a DOS Application

If an application belongs to a group, the easiest way to start it is to double-click the program-item icon in the group window. If you associate a document with the program item, the document opens when you start the application.

To start an application from a group

1. Open the group window that contains the application's program-item icon.
2. Choose the program-item icon. (Double-click it, or choose Open from the File menu.)

Start an Application When You Start Windows

During Windows Setup, a StartUp group is created. When you add an application to the StartUp group, the application starts whenever you start Windows. You can add an application to a group by creating a program item, or by copying or moving an existing program item.

Special Feature:

If the StartUp group contains [SubGroups](#) all items within the subgroups will be launched.

Hint:

Hold down the SHIFT key when you start Windows to prevent Step-Up Program Manager from launching the programs in your Startup Group.

Move a Group

You can move a group from one group to another. When you move a group, it is removed from the source group.

To move a group to another group

1. Open the group window that contains the subgroup you want to move.
2. Open the destination-group window. Or, leave the destination group as an icon if you don't care where the icon for the moved group is placed .
3. Drag the group icon to the destination-group window (or icon).
4. Release the mouse button when the icon is on top of the destination-group window (or icon).

You can also move a group item by choosing the Move command from the [File Menu](#) .

Copy a Group

Sorry, you can't copy a group. Look for this feature in the next release of Step-Up Program Manager. See [Moving a Group](#).

SwitchBoard

The Step-Up Program Manager SwitchBoard is an alternate way to view your groups with Step-Up Program Manager. It also adds a clock and resource/memory monitor.



Below is a summary of SwitchBoard's components.



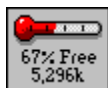
Easy access to top level groups. They're always alphabetized - use the scroll buttons on the right to locate any group quickly.



Quick Buttons. This is a special toolbox group that can be used to quickly run your most commonly used programs. Simply drag and drop any group item (or any file from File Manager).



Analog/Digital Clock. **Double-Click** on the clock face for the [Clock Configure Dialogbox](#) where you can select a different clock face or set an [alarm](#).



Resource Monitor. The thermometer shows you the percentage of free system resources and memory. **Double-Click** on the thermometer for the [Resource Monitor Dialog](#) to view your Environment Variables, System Information, memory Usage and Drive Information. You can also set the level of resources you'd like to maintain on your system.



[Run](#) button. Click here to bring up the Run Dialog.



[Find](#) button. Use this to quickly find any group item.



[Configure](#) Button. Click here to configure the look of SwitchBoard.



Help button.



Parent Group Button. Use this to navigate to the parent group of the currently displayed group.



Menu Buttons.

Desktop Buttons



Create a desktop button for your most commonly used applications by simply dragging any item from a group and dropping it on the desktop background. Or use File Manager and drop files on the desktop - a button will appear with the name of the file and the icon for the associated application.

Here are a few things you'll want to know about desktop buttons...

Desktop buttons look similar to, but are very different from minimized running applications. They simply make it easy to run a program - they are not the running programs themselves and do not consume memory and system resources as a running program would. You can distinguish a desktop item by the border around the icon and the icon text.

Clicking the right mouse button while over a desktop item will popup a menu listing the following items:

Open - Opens the application. This has the same effect as double-clicking the button.

Move The Move command allows you to move the current desktop item using the keyboard.

Copy - Makes an identical copy of this button on the desktop.

Delete The Delete command will delete the current desktop item.

Properties The Properties command works just like the properties command in the File menu. It allows you to change the desktop items icon, description, command line, working directory and shortcut keys.

Tip:

Click the right mouse button anywhere on the desktop surface and you'll see a quick menu. Select **Arrange Desktop** and all your desktop buttons and iconized applications will be neatly arranged.

SubGroups

Now you can put a group inside another group!

With Step-Up Program Manager, you'll find that organizing your groups reduces a considerable amount of clutter, making it easier to find the group you're looking for. Subgroups are a convenient way of organizing your main groups. With subgroups you can store related groups and launchable items (like programs, documents, spreadsheets) into one main group. Any group can contain subgroups and/or launchable items. In the example below WordProcessors group is a subgroup of the Application group.

The Run Dialog with Run History

The **Run** dialog now keeps a history list of the commands youve entered, making re-running them much faster and easier - just select the prior command youd like to replay.

Press the **Clear History** button the remove all entries from the list.

Hint:

Save some time and click the right mouse button anywhere on the desktop background to see the [Quick Menu](#). Select Run... to get to the Run dialog.

Hide/Show Windows

Select **Hide All** from the [Window Menu](#) to hide all your open group windows. This is especially useful when you have several open groups and want to see your top-level group icons. Select **Show All** to unhide all previously hidden group windows. **Close All** will close all open group windows.

Sort Groups

Use **Sort Group** from the **Window** Menu to alphabetically sort all the items in the currently active group.

Hint: The feature is also available from the [View Window As](#) dialog. If you check the *Change for all groups* option, you'll sort all your groups at once.

Desktop Mode

Now you can utilize your entire desktop without covering up your running programs. Step-Up Program Managers Desktop Mode is an alternate style in which the menus are placed at the top of the screen, and your groups can be opened anywhere on your desktop. All your top level groups are located in the group called "Quick Access". To change to Desktop Mode, From the [Options](#) Menu Select **Mode, Desktop**

Some things you may want to know about Desktop Mode:

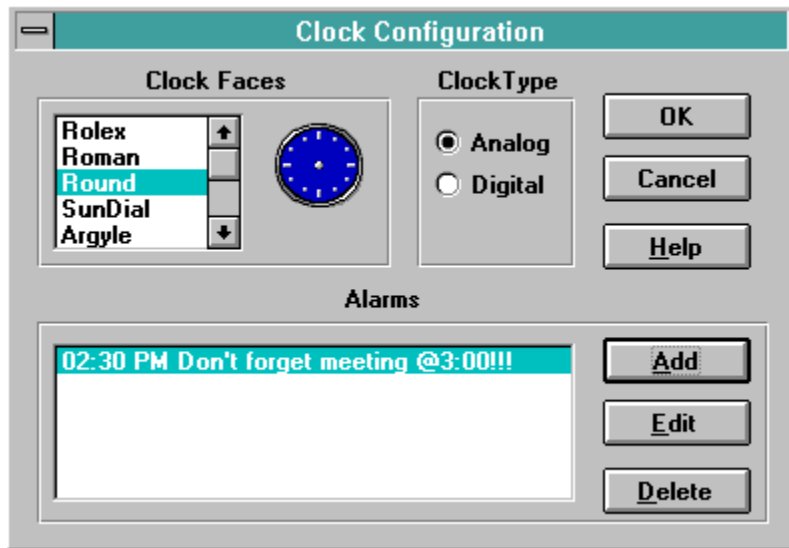
The Main Menu always available at top of screen. If the main menu is minimized, all groups (both those that are iconic and those that are open) are temporarily hidden.

Your group windows are free floating and are no longer limited to size and movement within the Step-Up Program Manager Window.

The menus apply only to your group windows.

Clock Configure Dialog

The Clock Configuration dialogbox allows you to change the clock type (analog or digital), analog clock face, digital clock color, and clock alarms.



Clock Faces - Select a clock face to be displayed on the SwitchBoard main window.

Clock Type - Choose between Analog and Digital clock types.

Alarms area:

Add - Takes you to the [Alarm Setup](#) dialog to create a new alarm.

Edit - Use this to edit the currently selected alarm.

Delete Pressing this button will delete the currently selected alarm.

The Resource Monitor Dialog

Step-Up Program Manager continuously monitors your systems vital **resources**. You will be notified should they drop below an acceptable level that you can choose. When notified that your Windows resources are low, you'll have an opportunity to save your work and examine your system - perhaps you have too many applications running at once - and can take steps to ease the strain before a program crashes.

Environment Variables Lists the DOS environment variables.

System Information Lists information about your computer like CPU type, Windows version, as well as display, mouse and keyboard information.

Memory Usage Lists the amount of memory and system resources available.

Drive Information Lists each drive in your computer along with disk space available on each drive.

Alarm Warning Level. Choose the percentage of free system **resources** that you'd like to maintain as a minimum on your system. If your resources should drop below this level, you'll receive a warning message.

Switching Between Modes

Select **M**ode from the **O**ptions Menu to select one of the three program modes available in Step-Up Program Manager.

Program Manager mode: Step-Up Program Manager appears to be almost identical to the original Windows Program Manager, but dozens of new features are available.

SwitchBoard Gives you a Compact view of your groups.

Desktop mode is another way to view your groups. The menus are placed at the top of the screen for easy access and group windows are free floating on the screen.

Configuring Step-Up Program Manager

Select **Configure** from the **Options** Menu to customize the look of Step-Up Program Manager.

Minimized View:

Normal This is the standard application icon.

Clock A working clock.

System Resources System Resource Thermometer.

Enable:

Toolbar Use this to turn the toolbar on or off.

Status Bar Use this to turn the status bar on or off.

More...

Takes you to the More Options dialog where you can configure the look of dialogs and select a custom cursor.

When Step-Up Program Manager is in SwitchBoard Mode, the configure dialog is a little different, reflecting some of the additional features available to you.

Group Area Size:

Small - The Group display area will display a single column.

Medium - The Group display area will be two columns wide.

Large - The Group display area to be three columns wide.

Enable Area:

Quick Keys Select this checkbox to turn the Quick Keys area on or off.

Clock/Sys Resource Select this checkbox to turn System Resource Monitor on or off.

General Settings:

Minimize on use Selecting this checkbox will cause SwitchBoard to minimize after you launch an application.

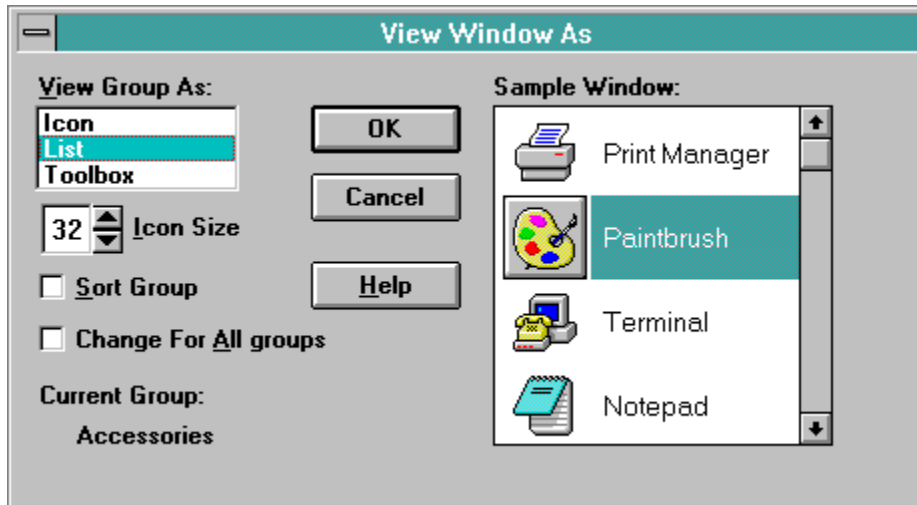
Save Settings on exit Selecting this checkbox will force SwitchBoard to save all changes.

Quick Access Area

The Quick Access Area is a convenient way to access your most commonly used programs and Groups. Simply Drag and Drop your favorite icons (or files from File Manager).

View Window As

From the **Window** Menu, Select **View Window As...**



Display any or all group windows in one of three different styles: **Icon** which mimics Program Manager's style; **LIST** which gives you a multicolumn list mode with icons displayed to the left; and **TOOLBOX** which displays just the icons in buttons grouped as a toolbox. Each display style has 5 different sizes ranging from 1/2 size to almost 2 times standard icon size. The *Change For All Groups* check box allows you to apply the new style and icon size to all your groups.

Toolbar

The Toolbar allows quick access to commonly used commands.



Click on a button below for more information.

-  Find Group Item
-  Find Again
-  Run
-  Arrange Items
-  Sort Active Group
-  Tile Groups
-  Cascade Groups
-  Close All
-  Hide All
-  Unhide All
-  Icon Display
-  List Display
-  Toolbox Display
-  Icon Size
-  Configure

Program Manager Mode

In its default state Step-Up Program Manager looks almost identical to the standard Microsoft Windows Program Manager. However Step-Up Program Manager extends the standard Program Manager features without requiring you to learn a completely new environment. All standard Program Manager menus, commands, keystrokes and group data files are unchanged, just enhanced with these and other features that never made it into Windows Program Manager.

Icon Spacing

Choose **S**pacin**g** from the **O**ptions menu to set the vertical or horizontal distance between icons in your group windows. This is especially useful for preventing icon captions from overlapping, or to reduce the amount of empty space in a group.

Quick Menu

Click the right mouse button on any group window or on the desktop surface for a quick menu of commonly used commands that apply to the item youve selected.

Reminder Alarms & Scheduled Events

Reminder Alarms

Dont be late for another meeting. Setting a reminder alarm is simple, just select **Alarms** from the **Options** Menu. Type in the message youd like to see, select the time and day for the notice and youll always get that seat right next to the boss! For regular events - like many meetings - select the days to repeat.

Scheduled Programs

Select the **Set Alarm Program** button in the alarm setup dialog and select any program youd like to run at a scheduled time and day. Its great for a daily backup at 5:00pm. If youre still working, just select **snooze** and the event will be on hold for 5 minutes. If you dont respond to the message within one minute, the program youve selected will run automatically.

More things you may want to know about alarms and sceduled events...

Youll notice a count down timer inside the Alarm Notification dialog. For reminder alarms, this is preset to 60 minutes. The dialog will automatically go away when this time expires.

Alarms that are not repeating are automatically deleted from the alarm list once they have played.

If you have a sound card installed, such as Ad Libs Sound Blaster, you can select any sound file to be played when an alarm goes off. Each alarm can have a different sound. Four sounds have been supplied.

Resources

"Resource" generally refers to anything that falls into one of three categories of Windows components - System Resources, Memory and Drive Space.

System resources are the basic elements of Windows itself. There are brushes that applications use to paint with different colors on your screen, pens for drawing text, etc.

Applications can behave strangely - from suddenly running very slowly to unusual error messages, to heart stopping lockups - should any critical resource run too low.

Icon Source

Icons that you can use to represent a program item are typically a part of the program file itself. Most programs have only one icon, but many have more, and some have dozens.

There are several other types of files that contain icons that you can use as well. These files normally have an extension of .ico, or .dll.

Hint: Look for a file in your windows directory called **MORICONS.DLL**. There are quite a few icons in it that you may like to use.

Quick Menu

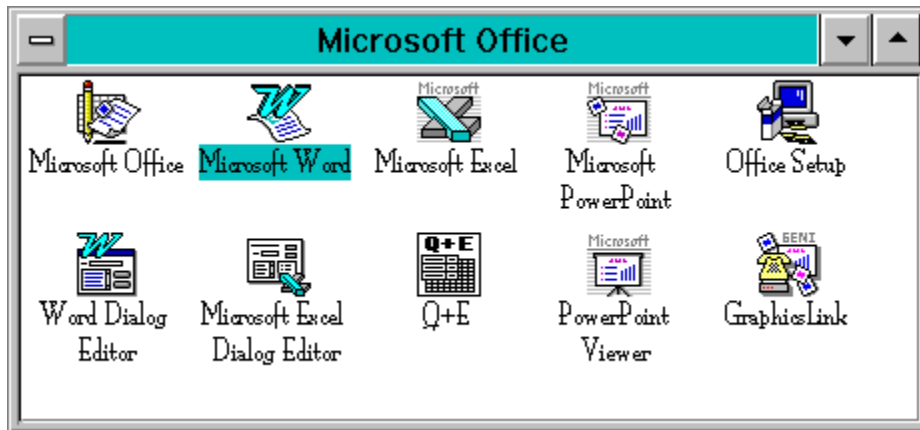
The Quick Menu appears when you click the right mouse button on the desktop background.

Run... - Select this to get the Run Dialog.

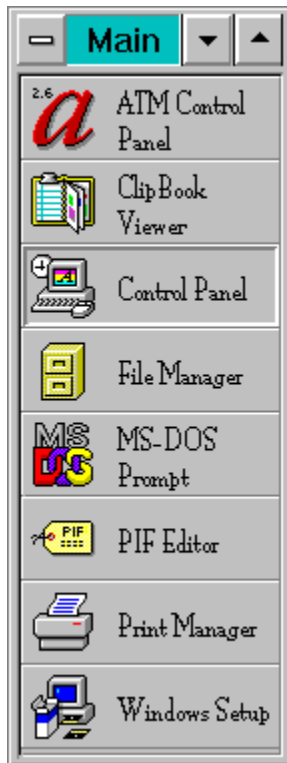
Create... - Takes you to the Create New Desktop Button dialog.

Arrange - Arrange your desktop buttons and iconized applications.

Icon Display Style



List Display Style



Toolbox Display Style



Cascade

This is an example of groups that are cascaded.



Tile Groups

This is an example of groups that are tiled.



More Windows

The More Windows control is an alphabetized list of all your groups. If you have subgroups, you'll notice a ► next to the name. This indicates that this group has subgroups. Click on the ► to see the names of the subgroups indented below the name of the parent group.



Icon Sizer

Use this to increase or decrease the size of the icons in the active group. To change all your groups at once, select View Window As... from the Window Menu.

Technical Support

Technical Support is available Monday, Tuesday and Thursday from 10am to 3pm Pacific Time.

(503) 223-6306.

If you have any other questions, comments or suggestions, you may write us at

Step-Up Software

333 SW Fifth Ave. Ste 405
Portland, Oregon 97204

or you may send us a FAX at (503) 223-6632

